

# FareCompare Fare Data Documentation

---

## Background

FareCompare processes published airfare data provided directly from the airlines. Domestic fares are updated three times a day. International fares are updated five times a day.

FareCompare's feeds are provided free of charge for non-commercial usage.

Feeds may also be used free-of-charge for commercial purposes if linkbacks to FareCompare are maintained. FareCompare provides commercial licenses for feeds that do not link back to FareCompare.

To ensure continuity in your data service, we encourage you to register with FareCompare.

FareCompare reserves the right to discontinue access to its fare feeds at any time.

---

## Table of Contents

<b>FareCompare Fare Data Documentation</b> .....	1
<b>General Parameters</b> .....	2
<b>Utilities</b> .....	2
<b>City Code Suggestion</b> .....	2
<b>Local Airport Lookup script</b> .....	3
<b>Original RSS Feed (version 0.1)</b> .....	4
<b>Firefox extension feed (XML)</b> .....	6
<b>MyAirportFeed</b> .....	7
<b>Mile Maven XML Feed</b> .....	8
<b>Firefox JSON Feed</b> .....	10
<b>Apple Dashboard MyAirport JSON Feed</b> .....	12
<b>FareTrend Graphs</b> .....	14
<b>Fare Container Display</b> .....	16
<b>Miscellaneous Display Options &amp; Feeds</b> .....	18
<b>Google Earth</b> .....	18
<b>Extension Marked Feeds</b> .....	18
<b>Google Sidebar (using myAirportFeed parameters)</b> .....	18
<b>Yahoo Widget (using myAirportFeed parameters)</b> .....	18
<b>City Code Table</b> .....	19
<b>City/Airport Exception Table</b> .....	19

# General Parameters

## Sub-Domain Structure (version 1.0)

Base URLs	Function
http://www.farecompare.com/search/	Consumer Search – Non RSS generated traffic
http://rss.farecompare.com/rss/	RSS Feed Publishing & Linking
http://beta.farecompare.com	Pre-release application development

## Utilities

### City Code Suggestion

Description
FareCompare provides a utility for auto completing airport codes. This service is helpful in simplifying user entry and also is important in ensuring only valid airport codes are submitted.

URL	Response/Description
http://suggest.farecompare.com/suggest/complete?qu=a	sendRPCDone(frameElement,"a", new Array("Atlanta GA (ATL)","Austin TX (AUS)","Albuquerque NM (ABQ)","Atlantic City NJ (AIY)","Anchorage AK (ANC)","Albany NY (ALB)","Akron/Canton OH (CAK)","Allentown/Bethlehem/Easton PA (ABE)","Asheville NC (AVL)","Abbotsford BC (YXX" ), new Array( "" , "" , "" , "" , "" , "" , "" , "" , "" , "" ), new Array(""));

## Local Airport Lookup script

### Description

FareCompare feeds are cached at Akamai. As a result, if a departure city is not identified, FareCompare servers will interpret the geographic location of the users IP address as the closest Akamai data center hosting the request.

To prevent this from occurring, a preliminary query needs to be made to the utility service below to determine the user's actual home airport. The departure city result of this query can then be used in any of the feeds documented below.

URL	Response/Description
<a href="http://suggest.farecompare.com/suggest/defaultDeparture?script">http://suggest.farecompare.com/suggest/defaultDeparture?script</a>	<pre>var defaultDepartureName = 'Dallas/Fort Worth'; var defaultDepartureState = 'TX'; var defaultDepartureCode = 'DFW'; var defaultDepartureLatitude = 32.855555555555554; var defaultDepartureLongitude = -96.85; var defaultCityName = 'Dallas/Fort Worth'; var defaultCityState = 'TX'; var defaultCityCode = 'DFW'; var defaultCityLatitude = 32.855555555555554; var defaultCityLongitude = -96.85;</pre>

## Original RSS Feed (version 0.1)

URL
/rss/<originCityCode>/<destinationCityCode>?<parameters>

Description
By default this feed returns all the published airfares within the specified market. Parameters can be used on the URL to restrict the number of fares returned (see below). Currently the RSS contains a link to the Rule Text Landing Page.

Parameters		
Name	Required / Optional	Function
departure	Required	Use the three letter city code
destination	Required	Use the three letter city code
limit	Optional	Limits the number of fares returned in the RSS response
maxprice	Optional	Sets an upper limit on the price of fares to be returned
carrier	Optional	A comma separated list of carriers or ALL
class	Optional	<del>Ignored was coach, business, first class</del>
peak	Optional	<del>If not-offpeak then filter out cheap fares that only allow travel midweek</del>
traveldate	Optional	<del>If set only show fares that are valid on or after the supplied date</del>
advpurch	Optional	<del>If set use the relational operator and number to filter out fares. i.e. le21 is fares that have an advance purchase &lt;= 21 days.</del>

Examples	
/rss/DRO/DFW	Return all fares from Durango, CO to Dallas, TX
/rss/DRO/DFW?limit=1	Return the cheapest fare from Durango to Dallas
/rss/DRO/DFW?limit=1&maxprice=250	Return the cheapest fare only if its less than \$250

/rss/DRO/DFW?carrier=UA,HP

Return all fares on United Airlines and America West

## Firefox extension feed (XML)

URL
/rss/<originCityCode>/<destinationCityCode>/generateXML?<parameters>

Description
This feed is identical to the simple RSS feed except the output has been changed to represent certain data elements as XML instead of being embedded within the RSS item description text.

Parameters		
Name	Required / Optional	Function
departure	Required	Use the three letter city code
destination	Required	Use the three letter city code
limit	Optional	Limits the number of fares returned in the RSS response
maxprice	Optional	Sets an upper limit on the price of fares to be returned (Not supported in new JSON feed)
carrier	Optional	A comma separated list of carriers or ALL
class	Optional	Ignored: was coach, business, first class
peak	Optional	Ignored: If not-offpeak then filter out cheap fares that only allow travel midweek
traveldate	Optional	Ignored: If set only show fares that are valid on or after the supplied date
advpurch	Optional	Ignored: If set use the relational operator and number to filter out fares. i.e. le21 is fares that have an advance purchase <= 21 days.

Examples	
/rss/DRO/DFW	return all fares from Durango, CO to Dallas, TX
/rss/DRO/DFW/generateXML?limit=1	return the cheapest fare from Durango to Dallas
/rss/DRO/DFW/generateXML?limit=1&maxprice=250	return the cheapest fare only if its less than \$250
/rss/DRO/DFW/generateXML?carrier=UA,HP	Return all fares on United Airlines and America West

# MyAirportFeed

URL
/rss/myAirportFeed?departure=XXX&<parameters>

Description
By default this feed returns all cheapest published airfare from the supplied departure city to the top 25 destinations within the US. Parameters can be used on to specify destinations, carriers and to return all fares.

Parameters		
Name	Required / Optional	Function
departure	Required	Use the suggest variables for default departure to set this value
destinations	Optional	A comma separated list of city pairs. If blank then either the top 50 cities or all cities will be returned.
carriers	Optional	A comma separated list of carriers.
nofilter	Optional	If set, all cities will be returned instead of the top 50.

Examples	
/rss/myAirportFeed?departure=DRO	return the cheapest fares to the top 50 destinations from Durango, CO
/rss/myAirportFeed?departure=DRO&destinations=SAN,LAX,SFO	return the cheapest fare from Durango to San Diego, Los Angeles, San Francisco
/rss/myAirportFeed?departure=DRO&carriers=UA,HP&nofilter	return the cheapest fare for United Airlines and America West to all destinations

## Mile Maven XML Feed

<b>URL</b>
/rss/milemaven?departure=XXX&destination=XXX

<b>Description</b>
This feed returns the cheapest published airfare for multiple classes of service for a single city pair for all carriers with service in the selected market.

Parameters		
Name	Required / Optional	Function
departure	Required	Use the three letter city code.
destination	Required	Use the three letter city code.

Examples	
/rss/milemaven?departure=ATL&destination=SFO	return the cheapest fare from Atlanta to San Francisco

Response	
<pre> -&lt;farecompare&gt; -&lt;carrier code="AA"&gt; -&lt;fare&gt; &lt;cabin&gt;Coach&lt;/cabin&gt; &lt;base&gt;258&lt;/base&gt; &lt;surcharges&gt;0&lt;/surcharges&gt; &lt;total&gt;278.6&lt;/total&gt; &lt;currency&gt;USD&lt;/currency&gt; -&lt;link&gt; http://rss.farecompare.com/rss/feed- milemaven?departure=ATL&amp;destination=DFW&amp;carrier=AA &lt;/link&gt; &lt;/fare&gt; -&lt;fare&gt; &lt;cabin&gt;Business&lt;/cabin&gt; </pre>	<p>The milemaven XML feed includes the lowest price for each carrier with fares filed in the selected city pair by class of service (coach, business and first class).</p> <p>The feed provides the net fare price (the base price plus the 7.5% federal excise tax and any fuel surcharges) as well as an estimated full price. In the case of non-stop travel, the full price is an accurate final price. The final price for connecting</p>

<pre> &lt;base&gt;1938.01&lt;/base&gt; &lt;surcharges&gt;0&lt;/surcharges&gt; &lt;total&gt;1958.61&lt;/total&gt; &lt;currency&gt;USD&lt;/currency&gt; -&lt;link&gt; http://rss.farecompare.com/rss/feed- milemaven?departure=ATL&amp;destination=DFW&amp;carrier=AA &lt;/link&gt; &lt;/fare&gt; -&lt;fare&gt; &lt;cabin&gt;First&lt;/cabin&gt; &lt;base&gt;598&lt;/base&gt; &lt;surcharges&gt;0&lt;/surcharges&gt; &lt;total&gt;618.6&lt;/total&gt; &lt;currency&gt;USD&lt;/currency&gt; -&lt;link&gt; http://rss.farecompare.com/rss/feed- milemaven?departure=ATL&amp;destination=DFW&amp;carrier=AA &lt;/link&gt; &lt;/fare&gt; &lt;/carrier&gt; </pre>	<p>service is an estimate. The final price can only be determined when the connecting airport has been selected.</p>
--	--

## Firefox JSON Feed

URL
/rss/firefox-destinations?departure=XXX&destinations=XXX&<parameters>

Description
This feed returns the cheapest published airfare for specific city pair(s).  Parameters can be used to specify destinations and carrier.

Parameters		
Name	Required / Optional	Function
departure	Required	Use the three letter city code.
destinations	Required	A comma separated list of city pairs.
carrier	Optional	A single carrier may be selected.

Examples	
/rss/firefox-destinations?departure=ATL&destinations=SAN,LAX,SFO	return the cheapest fare from Atlanta to San Diego, Los Angeles, San Francisco
/rss/firefox-destinations?departure=ATL&destinations=SFO&carrier=UA	return the cheapest fare from Atlanta to San Francisco for United Airlines

Response	
<pre>{   "fares":   [     {       "item": "1",       "origin": "ATL",       "originCityName": "Atlanta, GA",       "originCityLatitude": "33.651666666666664",       "originCityLongitude": "-84.418333333333334",       "destination": "SFO",       "destinationCityName": "San Francisco, CA",       "destinationCityLatitude": "37.616666666666667",       "destinationCityLongitude": "-122.383333333333334",     }   ] }</pre>	<p>The JSON feed includes longitude and latitude for both origin and destination airports.</p> <p>The feed also includes a rating of the current fare in relation to historic pricing. A rating of 4 is the best (lowest) price. A rating of 0 represents the highest price over the last 24 month period.</p>

<pre>"pubdate":"200606202000", "price":"372", "carrier":"UA", "carrierName":"United", "rating":"0", "link": "http://rss.farecompare.com/rss/feed-firefox- destinations?departure=ATL&amp;destination=SFO"}] }</pre>	
---	--

# Apple Dashboard MyAirport JSON Feed

URL
/rss/dashboard-destinations?departure=XXX<parameters>

Description
This feed returns the cheapest published airfare for a specific origin city  Parameters can be used to specify carriers.

Parameters		
Name	Required / Optional	Function
departure	Required	Use the three letter city code.
carriers	Optional	A comma separated list of carriers.

Examples	
/rss/dashboard-destinations?departure=ATL	return the cheapest fare from Atlanta to the top 50 cities
/rss/dashboard-destinations?departure=ATL &carrier=UA	return the cheapest fare from Atlanta to the top 50 cities for United Airlines

Response	
<pre>{   "fares":   [     {       "item": "1",       "origin": "ATL",       "originCityName": "Atlanta, GA",       "originCityLatitude": "33.651666666666664",       "originCityLongitude": "-84.418333333333334",       "destination": "CLT",       "destinationCityName": "Charlotte, NC",       "destinationCityLatitude": "35.216666666666667",       "destinationCityLongitude": "-80.933333333333334",       "pubdate": "200606211000",       "price": "178",       "carrier": "HP",     }   ] }</pre>	<p>The JSON feed includes longitude and latitude for both origin and destination airports.</p> <p>The feed also includes a rating of the current fare in relation to historic pricing. A rating of 4 is the best (lowest) price. A rating of 0 represents the highest price over the last 24 month period.</p>

<pre>"carrierName": "America West", "rating": "2", "link": "http://rss.farecompare.com/rss/feed-dashboard- destinations?departure=ATL&amp;destination=CLT"}},</pre>	
---	--

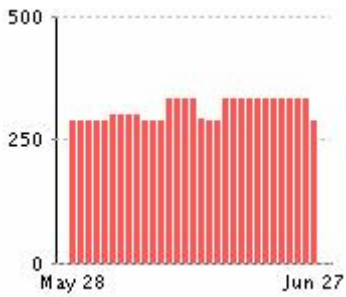
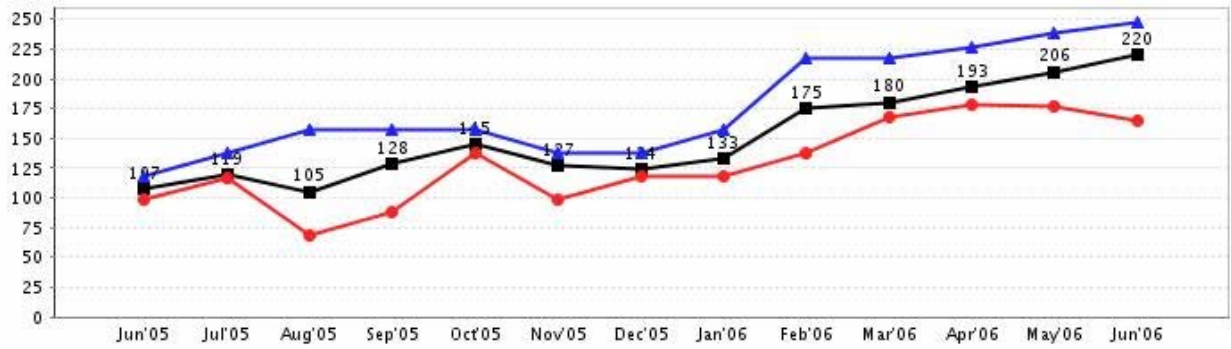
## FareTrend Graphs

URL
<p><b>NOTE: Use of graphs requires insertion of linkbacks to the FareCompare site as per below.</b></p> <p><b>30 Day Chart</b>            &lt;a href=http://www.farecompare.com/search/year?departure=XXX&amp;destination=XXX&gt;&lt;img src="http://history.farecompare.com/analysis/monthhistory.img?departure=XXX&amp;destination=XXX&amp;width=179&amp;height=150&amp;chartType=thirtyDays"&gt;&lt;/a&gt;</p> <p><b>11 Month Chart</b>            &lt;a href=http://www.farecompare.com/search/year?departure=XXX&amp;destination=XXX&gt;&lt;img src="http://history.farecompare.com/analysis/yearhistory.img?departure=XXX&amp;destination=XXX&amp;width=700&amp;height=200&amp;chartType=elevenMonths"&gt;&lt;/a&gt;</p>

Description
<p>The strings above define the 30 day and eleven month fare history. The size parameters are currently set for optimal display. The sizes may be adjusted.</p>

Parameters		
Name	Required / Optional	Function
departure	Required	Use the three letter city code.
destinations	Required	A comma separated list of city pairs.

Examples	
<pre>&lt;img src="http://history.farecompare.com/analysis/monthhistory.img?departure=ATL&amp;destination=SFO&amp;width=179&amp;height=150&amp;chartType=thirtyDays"&gt;</pre>	<p>Displays a 179x150 pixel chart of the lowest prices from ATL to SFO for the last 30 days</p>
<pre>&lt;img src="http://history.farecompare.com/analysis/yearhistory.img?departure=ATL&amp;destination=SFO&amp;width=700&amp;height=200&amp;chartType=elevenMonths"&gt;</pre>	<p>Displays a 700x200 pixel chart of the lowest prices (lowest low, average low and highest low) from ATL to SFO for the last 11 months.</p>



## Fare Container Display

### URL

[www.farecompare.com/search/scroller?departure=XXX&<parameters>](http://www.farecompare.com/search/scroller?departure=XXX&<parameters>)

### Description

By default this feed returns the top 25 cheapest published airfare in a FareCompare branded fare display box.

Parameters can be used on the URL to specify a departure, destinations, as well as specific carriers. Carrier branded fare boxes are available.

### Parameters

Name	Required / Optional	Function
departure	Required	If a city code is not supplied, use the suggest URL to determine the nearest major airport. If no departure is indicated, the feed will default to the data center where the feeds are cached.
destinations	Optional	A comma separated list of city pairs. If blank then either the to25 cities or all cities will be returned.
carriers	Optional	A comma separated list of carriers.
skin	Optional	Airline branded fare display box. Current skins supported: airtran, american, continental, delta, northwest, united, usairways, worldspan
skin	Optional	New feature: skin=none provides the fare container with no border.

### Examples

<a href="http://www.farecompare.com/search/scroller?departure=ATL">/search/scroller?departure=ATL</a>	Display the cheapest fares to the top 25 destinations from Atlanta, GA
<a href="http://www.farecompare.com/search/scroller?departure=ATL&amp;carriers=FL">/search/scroller?departure=ATL&amp;carriers=FL</a>	Display the top 25 cheapest AirTran fares from Atlanta, GA in the FareCompare fare display box.
<a href="http://www.farecompare.com/search/scroller?departure=ATL&amp;carriers=FL&amp;skin=airtran">/search/scroller?departure=ATL&amp;carriers=FL&amp;skin=airtran</a>	Display the top 25 cheapest AirTran fares from Atlanta, GA and display the fares in the AirTran fare display box.

**FareCompare™**

Atlanta, GA

**DESTINATIONS**

- \$110 Memphis, TN
- \$118 Raleigh/Durham, N
- \$138 Charlotte, NC
- \$147 New Orleans, LA
- \$158 Milwaukee, WI
- \$158 Orlando, FL
- \$158 Tampa, FL
- \$166 Boston, MA
- \$166 Baltimore, MD
- \$166 Chicago-All Airport:

**AirTran AIRWAYS**

Atlanta, GA

**DESTINATIONS**

- \$110 Memphis, TN
- \$118 Raleigh/Durham, N
- \$138 Charlotte, NC
- \$147 New Orleans, LA
- \$158 Milwaukee, WI
- \$158 Orlando, FL
- \$158 Tampa, FL
- \$166 Boston, MA
- \$166 Baltimore, MD
- \$166 Chicago-All Airport:

**Atlanta, GA**

- \$110 Memphis, TN
- \$118 Raleigh/Durham, N
- \$138 Charlotte, NC
- \$147 New Orleans, LA
- \$158 Milwaukee, WI
- \$158 Orlando, FL
- \$158 Tampa, FL
- \$166 Boston, MA
- \$166 Baltimore, MD
- \$166 Chicago-All Airport:

# Miscellaneous Display Options & Feeds

## Google Earth

URL
-----

<a href="http://rss.farecompare.com/rss/google-earth?nofilter=yes">http://rss.farecompare.com/rss/google-earth?nofilter=yes</a>
---

## Extension Marked Feeds

### Google Sidebar (using myAirportFeed parameters)

URL
-----

<a href="rss/google-sidebar?&lt;parameters&gt;">rss/google-sidebar?&lt;parameters&gt;</a>
---

### Yahoo Widget (using myAirportFeed parameters)

URL
-----

<a href="/rss/yahoo-destinations?&lt;parameters&gt;">/rss/yahoo-destinations?&lt;parameters&gt;</a>
---

# City Code Table

## City/Airport Exception Table

Description
Fares are filed by city code rather than by airport code. This can cause confusion since most consumers are familiar with airport codes, such as JFK for Kennedy airport in New York. In addition a few city codes are also airport codes such as HOU for Houston and also for Hobby airport.
When manually constructing queries, please keep use the CITY codes only. Airport codes (JFK, LGA, ORD, MDW, etc. will not return any fares).
You can go to Orbitz to see a complete listing of city codes worldwide along with airport codes.

City	City Code	Airport	Airport Code
<b>Alexandria, VA</b>	<b>AEX</b>	<b>Alexandria International</b>	<b>AEX</b>
	AEX	Esler Field	ESF
<b>Wausau, WI</b>	<b>AUW</b>	<b>Municipal</b>	<b>AUW</b>
	AUW	Central Wisconsin	CWA
<b>Chicago, IL</b>	<b>CHI</b>	<b>Chicago FSS</b>	<b>CHI</b>
	CHI	Midway	MDW
	CHI	O'Hare International	ORD
<b>Dallas, TX</b>	<b>DFW</b>	<b>Dallas/Ft Worth Intl</b>	<b>DFW</b>
	DFW	Love Field	DAL
<b>Detroit, MI</b>	<b>DTT</b>	<b>Metropolitan Area</b>	<b>DTT</b>
	DTT	Wayne County Int'l	DTW
<b>Fort Myers, FL</b>	<b>FMY</b>	<b>Page Field</b>	<b>FMY</b>
	FMY	Southwest Florida Reg	RSW
<b>Fayetteville, AK</b>	<b>FYV</b>	<b>Municipal (Drake Fld)</b>	<b>FYV</b>
	FYV	Northwest Arkansas Rgn	XNA
<b>Harrisburg, PA</b>	<b>HAR</b>	<b>Harrisburg Skyport</b>	<b>HAR</b>
	HAR	Harrisburg Intl	MDT
<b>Hartford, CT</b>	<b>HFD</b>	<b>Brainard</b>	<b>HFD</b>
	HFD	Bradley International	BDL
<b>Houston, TX</b>	<b>HOU</b>	<b>Hobby</b>	<b>HOU</b>
	HOU	Houston	IAH

<b>Kansas City, MO</b>	<b>MKC</b> MKC	<b>Metropolitan Area</b> International	<b>MKC</b> MCI
<b>New York, NY</b>	<b>NYC</b> NYC NYC NYC	<b>JFK, LGA &amp; EWR airports</b> John F Kennedy Intl La Guardia Newark International	<b>NYC</b> JFK LGA EWR
<b>Orlando, FL</b>	<b>ORL</b> ORL	<b>Herndon</b> International	<b>ORL</b> MCO
<b>Philadelphia, PA</b>	<b>PHL</b> PHL	<b>International</b> Trenton-Mercer	<b>PHL</b> TTN
<b>Poughkeepsie</b>	<b>POU</b> POU	<b>Metropolitan Area</b> Stewart	<b>POU</b> SWF
<b>Washington, DC</b>	<b>WAS</b> WAS WAS WAS	<b>IAD, DCA, and BWI Airports</b> Ronald Reagan National, Airport Dulles Intl Balt/Wash Intl	<b>WAS</b> DCA IAD BWI